

BRIGGS & STRATTON

Part # B390492

- Fits 6, 7 & 8 HP horizontal engines
 - 143400, 146400, 147400, 170400, 190400 series
 - 3-3/16" OD x 1-5/16" ID x 2-13/16" H
- Replaces **B&S 390492**



Part # B270209

- Fits 92900, 100900 & 100200 series
 - 3-13/16" OD x 1-5/16" ID x 2-13/16" H
- Replaces **B&S 496047, 270209**



Part # B392286

- Fits 251400, 252400, 253400 & 255400 series
 - 10, 11 & 12 HP horizontal shaft engines
 - 5" OD x 3-1/2" ID x 2-11/32" H
- Replaces **B&S 392286**



Part # B270973

- Pre-cleaner
 - Fits our part # B392286
 - Pre-oiled
- Replaces **B&S 270973**



Part # B392308

- For 130200 - 132000 series
 - 2-3/4" H x 2-3/4" Dia. x 1-3/16" Inside Dia.
 - Use our foam pre-cleaner # P30132
- Replaces **B&S 392308, 392308S**



Part # B820263

- Fits 430447, 432447, 437447, 522447, 543447, 580447, 582447, 587447, 588447, 589447, 58A447 series engines, 31 HP diesel
 - Also fits 27 HP Vanguard engine
 - 3-1/2" OD x 7-3/8" H
- Replaces **B&S 820263; Kohler 2508302-S**



Part # B270979

- Pre-oiled foam pre-cleaner
 - For our part # B820263
 - 4-1/2" L x 3-1/8" W
- Replaces **B&S 271466, 270979**



Part # B393957

- Fits 7 - 18 HP horizontal engines
 - 170400, 190400, 195400, 233400, 300400, 320400, 325400 & 326400 series
 - 4-1/4" OD x 2" ID x 3-13/16" H
- Replaces **B&S 393957, 393957S, 390930**

BRIGGS & STRATTON continued

Part # P30920

- Pre-oiled foam pre-cleaner
 - 7-1/4" L x 3-3/4" W
- Replaces **B&S 270782, 271794, 2717940S**



Part # B710265

- 4 HP Vanguard
 - Blue urethane seal
 - 6-1/4" L x 2-5/8" W
- Replaces **B&S 710265**



Part # B394019

- 16 & 18 HP vertical engines
 - 402700, 421700 & 422700 series
 - 9-5/8" L x 4-1/4" W x 2-1/2" H
- Replaces **B&S 394019, 394019S, 398825, 4136**



Part # B393725

- 11 HP vertical engines
 - 251700 & 252700 series
 - Use on John Deere 111, 111H, S92
 - 5-3/16" L x 3" W x 2-1/2" H
- Replaces **B&S 393725**



Part # B393406

- 7 & 8 HP vertical engines
 - 170700, 190700, 191700, 192700, 193700 series
 - Use on John Deere 108, R72, S82
 - 5-1/2" L x 3-1/8" W x 2-1/8" H
- Replaces **B&S 393406**



Part # B396424

- 4 & 5 HP engines
 - 114900, 110900, 112200 series, 130000 - 132900 series
 - 2-3/4" OD x 1-1/4" Bottom ID x 1/4" Top ID x 2-13/16" H
- Replaces **B&S 396424, 36424S**



Part # B491519

- 10 HP - 12 HP IC vertical engines
 - 253700, 256700, 280700, 281700 series
 - 8-5/8" L x 2.635" W x 2.7" H
- Replaces **B&S 491519, 399806, 399806S**



Part # B271962

- Pre-oiled foam pre-cleaner
 - 7-3/4" L x 2-3/4" W
- Replaces **B&S 271962, 271962S**



BRIGGS & STRATTON continued

Part # B30108

- 7, 8 & 11 HP engines
 - Mounting center holes
 - Use our foam pre-cleaner # B271962
- Replaces **B&S 399968**



Part # B394018

- 16 HP, 18 HP and 20 HP Vanguard engines
 - Fits 290400, 290700, 294400, 294700, 303400, 303700, 350400, 350700, 404000, 401400, 402400, 421400, 422400
 - 7" L x 5-1/2" W x 2-1/4" H
- Replaces **B&S 392642, 394018, 394018S;**
Grazer 900-5005; Woods 70301



Part # P33201

- Foam wrap for our part # B394018
- Replaces **B&S 271271, 272490**



Part # B393957

- 7 HP, 8 HP, 10 HP, 13 HP & 15 HP horiz. engines
 - Fits 170400, 171400, 190400, 194400, 195400, 220400, 221400, 222400, 233400, 243400, 252400, 253700, 254400, 290400, 294400, 302400, 303400, 326400
 - 4-1/4" OD x 2" ID x 3-3/4" H
- Replaces **B&S 393957, 393957S, 390930, 24519;**
John Deere PT9334



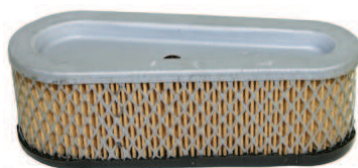
Part # B491021

- 12.5 & 14 HP Vanguard vertical shaft engines
 - Fits 260700 & 261700 series, Metal cap
 - 6-3/4" L x 2-7/8" W x 3-1/8" H
- Replaces **B&S 491021**



Part # B493910

- 19 & 28 CID vertical engines
 - 7-1/4" L x 2-3/8" W x 2-3/8" H
- Replaces **B&S 493910, 691667**



Part # B30926

- Pre-oiled foam pre-cleaner
 - 7" L x 2-3/8" H
- Replaces **B&S 272477S**



Part # B493909

- 28 CID vertical engines
 - 7-1/4" L x 2-7/8" W x 3" H
- Replaces **B&S 493909, 496894, 496894S**



Part # B7095

- Foam pre-cleaner for our part # B493909
 - 7" L x 3" W
- Replaces **B&S 272403, 272403S**



BRIGGS & STRATTON continued

Part # B692446

- 123600 and 126672 series
 - 3-7/8" L x 2-1/2" W x 3" H
- Replaces **B&S 692446**



Part # B494586

- 5 HP Quantum engine models
 - 12U800 - 12W800 series
 - 4" L x 2-1/2" W x 2-1/4" H
- Replaces **B&S 497725, 497725S, 494586**



Part # B498596

- Intek Pro 5.5 & 6.5 HP engines
 - 110400, 111400, 120400, 121400, 123400 & 121600 series engines
 - 3-15/16" L x 2-1/2" W x 3" H
- Replaces **B&S 690610, 498596, 697029**



Part # P30915

- Pre-oiled foam pre-cleaner
- Replaces **B&S 273356, 273356S**



Part # B692519

- Fits 18-36 HP Vanguard engines
 - Without cannister air filtration system
 - 7-13/16" OD x 5-1/2" ID x 2-1/4" H
- Replaces **B&S 692519**

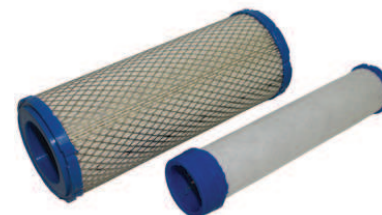


Part # K25083

- Fits newer 31-36 HP Vanguard engines
 - 10-3/4" L x 4-1/8" OD x 2-1/2" ID
- Replaces **B&S 821136**

Part # K2508304

- Inner filter for part # K25083
- Replaces **B&S 841497**



Part # B792105

- Fits Intek/Extended Life series engine
 - 22-26 HP
 - 6-9 HP Vanguard engines
 - 5" L x 3-1/8" W x 4-7/8" H
- Replaces **B&S 792105**



Part # P33208

- Pre-filter for our part # B792105



BRIGGS & STRATTON continued

Part # P180659

- 5-7/8" L x 3-1/8" dia.
- Replaces **B&S 793569, B&S pre-filter 793685; J Deere GY21055**



Part # P180038

- Fits 100602 series engines
- Replaces **B&S 792038**



Part # P180166

- Fits 093332 series
- 9 CID horizontal engine
- Replaces **B&S 790166**



Part # P180101

- Fits models 445700, V-twin engines
- Use our pre-filter P30914
- Replaces **B&S 792101**



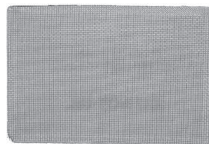
Part # B397795

- 3, 3-1/2, 4 & 5 HP Max engines
- 90700, 91700, 110700 & 130700 series
- 4 & 5 HP 2 cycle engines
- 6-1/2" L x 4-1/2" W x 3/4" H
- Replaces **B&S 397795, 397795S;**
- John Deere PT11025, 15853**



Part # P30038

- Pre-cleaner fits our part # B397795
- 7" L x 4-1/16" W
- Replaces **B&S 399039**



Part # P12080

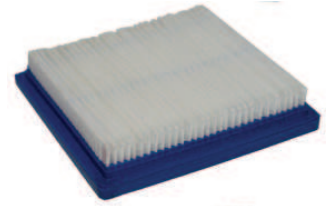
- Fits newer models
- Fits V-twin models, Vanguard
- 5-1/2" ID x 7-3/4" OD x 2-1/4" H
- Replaces **B&S 692519**



BRIGGS & STRATTON continued

Part # B399877

- 3.5 HP Quantum engine with side mount starter
- 100700 series
- 4-5/8" L x 4-5/8" W x 13/16" H
- Replaces **B&S 399877, 399877S**



Part # B491384

- 9 HP Vanguard
- 1613400, 161432, 161437, 161452 & 161457 series
- 7" L x 3-1/2" W x 1-1/2" H
- Replaces **B&S 491384**



Part # B492889

- Pre-oiled foam pre-cleaner
- Fits our part # B491384
- 6-1/4" L x 3" W x 3/8" H
- Replaces **B&S 492889, 495246, 491823**



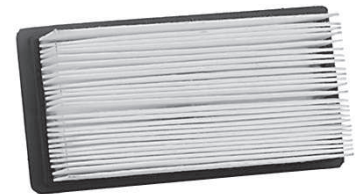
Part # B494511

- 5 HP IC plus engines
- 133400 series engines
- 7" L x 3-1/2" W x 1-1/8" H
- Replaces **B&S 494511, 494511S**



Part # B691643

- 8 HP IC plus engines
- 7" L x 3.5" W x 1.5" H
- Replaces **B&S 496077, 691643**



Part # B697152

- 21B900 series engines
- 7-1/4" L x 3-1/8" W x 1-1/2" H
- Replaces **B&S 698413, 697152**



Part # PF92

- Foam pre-cleaner
- Replaces **B&S 697292**



Part # B710266

- 9 HP Vanguard engines
- 235400, 245400 series
- 8-3/8" L x 4" W x 1-1/8" H
- Replaces **B&S 710266**



Part # P30962

- Pre-oiled foam pre-cleaner for # B710266
- Replaces **B&S 710268**



BRIGGS & STRATTON continued

Part # B805113

- 12.5, 14, 16 HP Vanguard
 - 290400, 290700, 303400 & 303700 series
 - 7" L x 6-1/4" W x 5/8" H
- Replaces **B&S 805113**



Part # B491588

- 3 HP & 5 HP horizontal engines
 - All 3.5 - 6 HP Quantum engines. Top Starter
 - Fits 80200, 82200, 83400, 112200, 121700, 121800, 122700, 123700, 123800, 124700, 124800, 125700, 126700, 126800, 130200, 132200
 - 5-1/2" L x 4-1/2" W x 13/16" H
- Replaces **B&S 491588, 491588S**
\$2.99 ea. \$2.15 for 5 or more



Part # PF88

- Foam pre-cleaner
 - Use with our part # B491588
 - 4-7/8" L x 4-1/4" W x 5/16" H
- Replaces **B&S 491435, 491435S, 271933**



Part # B499486

- 18 HP - 24 HP Intek V-twin engines
 - Fits 405700 - 47700
 - 7-1/4" L x 4-1/8" W x 1-1/2" H
- Replaces **B&S 499486, 499486S**



Part # P30914

- Pre-cleaner for our part # B499486
 - 6-3/4" L x 3-3/4" W x 1/4" H
- Replaces **B&S 273638S, 273638**



Part # B697634

- 14 HP - 17.5 HP I/C, Intek, OHV & AVS™ engines
 - Models 284H07, 285H07, 31E700, 285H77, 286H770, 31E707, 31E777, 31G777, 31H777 series
 - 9" L x 3-1/8" W x 1-1/2" H
- Replaces **B&S 698083, 697634, 697014**



Part # PF15

- Foam pre-cleaner for our part # B697634
- Replaces **B&S 697015**



Part # B272235

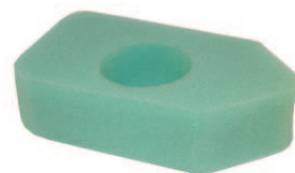
- 3, 3.75 HP Classic and Sprint after 1992
 - 5-7/8" L x 3-3/4" W x 1-1/4" H
- Replaces **B&S 272235, 272235S**



BRIGGS & STRATTON continued

Part # B698369

- 10a900, 98900, 9b900, 9c900 series after code 02101000
 - Pre-oiled
 - 5-1/8" L x 2-7/8" W x 1-1/4" H
- Replaces **B&S 698369**



Part # P12272

- Fits 120T00
 - 400-500 series vertical shaft engines
 - 4-1/2" L x 4" width x 1-1/4" Thick
- Replaces **B&S 794071**



DOLMAR/MAKITA

Part # 154663

- DPC6200, DPC6201, DPC7300, DPC7301, DPC7310, DPC7311, DPC6410, DPC6411
- Replaces **Dolmar 394-173-020**



Part # 154673

- DP7310, DPC7311, DPC6410, DPC6411
- Replaces **Dolmar 326-173-080**



Part # 43916

- Filter Set
 - Fits Dolmar PC6412, 6414, 7312, 7314 cutoff saws
 - Fits DPC6200, 6201, 6400, 6401, 6411, 7300, 7301, 7310, 7311 cut-off saws
- Replaces **Dolmar/Makita 394-173-010 TM 394-173-030**



ECHO

Part # E226

- Fits blowers PB403, PB413, PB603, PB611 & PB650, PB620 and 700 series
- Replaces **Echo A226000031, A226000032**
\$3.95 ea., \$2.80 for 5 or more



ECHO continued

Part # E228

- Fits GT2000, GT1100 and GT2400 trimmers
- Fits ES2100, ES2400 shredders and vacs
- Fits HC1500, HC2000, HC2400, HC2410, SRM265 hedge trimmers
- 2-5/8" L x 2-5/8" W x 1/4" hole dia.

Replaces **Echo 130310-54130**

\$4.95 ea., \$3.25 for 5 or more



Part # E229

- Fits PE2400 & PE2601 stick edgers
- Fits SRM1501, SRM2301 & SRM2400 trimmers
- Fits SHC2400, HC1000 - HC2100 hedge clippers
- 2-1/2" w x 2-1/4" top x 2-5/8" bottom x 1/16" thick

Replaces **Echo 130310-04560**



Part # E230

- Fits model SRM2500 trimmers
- 3-5/16" L x 3" top x 3-1/4" bottom x 1/16" thick

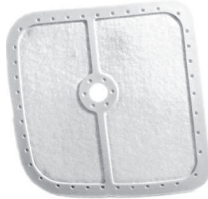
Replaces **Echo 130310-51730**



Part # E231

- Fits models SRM2400/SB, SRM2400, SRM2601, SRM3110, SRM3400, SRM3800, SRM 3100SB trimmers
- Fits models PB2400 & PB24LM blowers
- Fits models SHC2400 & HGA2400 clippers
- Fits model STS2400 pruner
- 3-1/8" x 3-1/8" x 1/4" hole

Replaces **Echo 130310-51830**



Part # E227

- Pre-oiled foam air filter
- Backpack blowers
- Use with heavy duty filter kit
- Fits Echo PB400E, John Deere 4 and 4E
- Toro 40 cc blowers
- 7" L

Replaces **Echo 130310-00760;**

John Deere PT8376

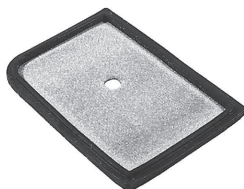


Part # E232

- Model PB210E
- John Deere blower # 2 E
- 4" L x 2-7/8" W

Replaces **Echo 130310-03360;**

John Deere PT10281



Part # E836

- Model PB460, PB4600 & PB6000, PB460, LN, PB461, PB601, PB602, PB6000, PB750H, PB750T, PB755H, PB755T, PB75DH, T, PB755 H, T backpack blowers
- 10-1/2" L x 3" W x 1-1/2" H

Replaces **Echo 13030508360, 1030508361**

\$4.95 ea., \$3.99 for 5 or more



ECHO continued

Part # E260

- Model PB4600 backpack blower
- Use with our part # E836
- 10-1/2" L x 3" W x 3/4" H

Replaces **Echo 130310-08260**

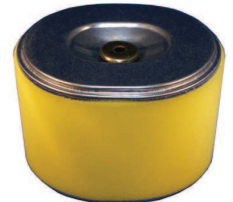


HONDA

Part # H306

- 8 HP & 9 HP horizontal engines
- GX240, GX240K1, GX270
- 4" L x 3-1/2" W x 3-1/8" H
- Pre-filter included

Replaces **Honda 17210-ZE2-505, code 5266721, 17210-ZE2-515, 17210-ZE2-821, 17210-ZE2-822, code 2893899**



Part # P30934

- Foam wrap for part # H306

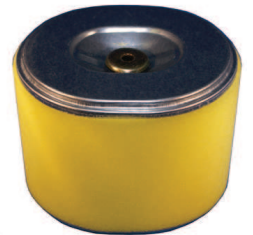
Replaces **Honda 17218-ZE2-821, code 2538429**



Part # H301

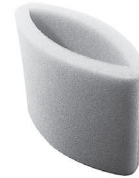
- 8 HP - 13 HP models
- GX240, GX270, GX340, GX390 equipped w/cyclone air filter
- 4" L x 3-1/2" W x 3-5/8" H
- Pre-filter included

Replaces **Honda 17210-ZE3-010, code 2893907, 17210-ZE3-505**



Part # H323

- Foam wrap for part # H301

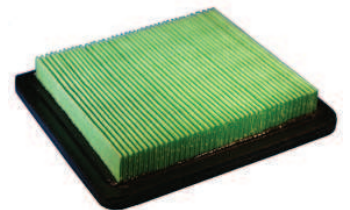


Part # H320

- 4 HP & 5 HP vertical shaft engines
- For walk-behind mowers
- GC135, GCV135, GC160, GCV160, GX100, GXV57
- Fits model F220 tiller

• 5-3/16" L x 4-7/16" W x 3/4" H

Replaces **Honda 17211-ZE8-000, code 5580402, 6718159**

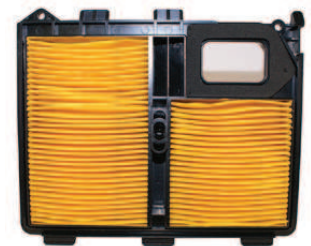


Part # H321

- GX610 and GX620
- Old style

• 9-1/2" L x 7-1/4" W x 1-1/4" H

Replaces **Honda 17010-ZJ1-000, code 4956579**



HONDA continued

Part # H322

- GXV340K2 & GXV390K1
 - 11 HP and 13 HP
 - Includes foam pre-filter
 - 4-7/8" L x 2-3/8" W x 3-1/2" H
- Replaces Honda # **17211-ZF5-V01**



Part # H303

- HT3813 & 4213 tractors
 - GX360K1 series engines
 - Include foam pre-filter
 - 6-1/2" L x 4-1/8" W x 1-7/8" H
- Replaces Honda **17210-ZA0-506**,
code 5168273; **17211-ZA0-702**,
code 2893923



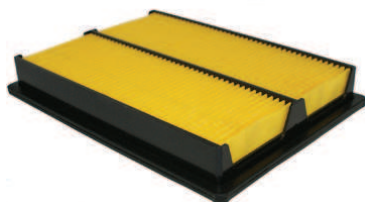
Part # H307

- GX110, GX120K1, 4 HP
 - Fits 400 and 401K series
 - Includes foam pre-cleaner
 - 4" L x 2-7/8" W x 2-1/16" H
- Replaces Honda **17210-ZE0-505**,
code 5273032; **17210-ZE0-822**,
2893873; **17210-ZE8-820**,
code 1488790



Part # H324

- GX610KD, GX620K1 and GX670
 - 20 HP engines
 - New style
 - 6-3/4" L x 8-3/4" W x 1-1/4" H
- Replaces Honda **17210-ZJ1-842**,
code 7120397; **17210-ZJ1-841**



Part # H325

- GX610 and GX620 with remote mount air cleaner assembly
 - 8" H x 3-5/8" OD x 2" ID
 - Base 4-1/8" OD
 - Seal 3-1/8" OD
- Replaces Honda **17210-759-013**



Part # H308

- 8.5 & 11 HP OHV
 - 11 & 13 HP vertical engines
 - GXV270, 340, 390
 - Includes foam pre-cleaner
 - 5-1/8" L x 2-5/8" W x 3-1/8" H
- Replaces Honda **17210-ZE8-003**,
code 2090207; **17210-ZE8-013**,
code 2910727; **17210-ZF5-505**,
code 5248299



Part # P30507

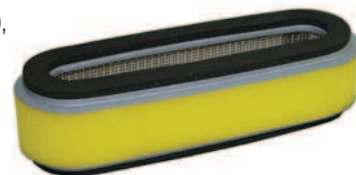
- Pre-oiled foam pre-cleaner for part # H308
 - 6-1/4" L x 2-3/4" W
- Replaces Honda **17218-ZF5-505**



HONDA continued

Part # H304

- Models GV150, GV200, GVX120, GVX1210, HR195, HRA214
 - 3-1/2, 4 & 5 HP engines
 - Foam pre-cleaner included
 - 7-9/16" L x 2-1/2" W x 2" H
- Replaces Honda **17210-ZE6-505**,
code 5185855; **17210-ZE6-003**,
code 1495902; **17211-888-013**; **code 1007483**



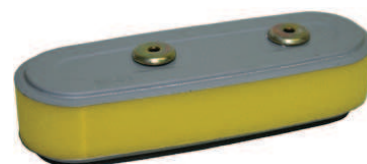
Part # H327

- Pre-oiled foam pre-cleaner
 - 8-1/4" L x 2-3/4" W
- Replaces Honda **17218-ZE6-505**, **code 5213293**;
17218-888-003, **code 1067149**



Part # H310

- GVX140, 120, 160
 - 4 & 5 HP vertical engines
 - HR216 & HRA216
 - Includes foam pre-cleaner
 - Metal top
 - 7-9/16" L x 1-7/8" H x 2-1/2" W
- Replaces Honda **17210-ZE7-505**, **code 5310289**;
17210-ZE7-013, **code 2741627**; **17210-ZE7-003**, **code 2289734**



Part # H314

- G300 & G400
 - 5500 & 6500 generators
 - Fits 3810 tractor
 - Includes foam pre-cleaner
 - 2-7/8" H x Bottom OD 5-3/8" x Top OD 3-7/8"
- Replaces Honda **17210-890-505**, **code 5311089**;
17211-890-003, **code 2893931**; **17211-890-013**, **code 1021518**



Part # H305

- GX140, GX160, GX200
 - 5 HP horizontal engines
 - Includes foam pre-cleaner
 - 4" L x 2-7/8" W x 2-5/8" H
- Replaces Honda **17210-ZE1-822**, **code 2893881**;
17210-ZE1-505, **code 5247408**; **17210-ZE1-820**, **code 1445782**



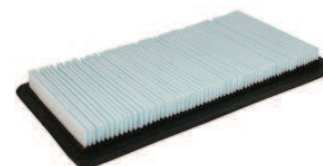
Part # H330

- Pre-oiled pre-cleaner
 - 5" L x 2-3/8" W
- Replaces Honda **17218-ZE1-821**,
code 2535029; **17218-ZE1-505**, **code 527802**



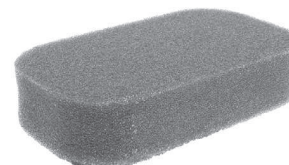
Part # H331

- GCV530, GXV530
 - 8-5/8" L x 4-5/8" W x 1" H
- Replaces Honda **17211-ZOA-013**



Part # H332

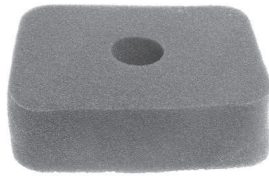
- GX160 & GX200
 - Pre-oiled
 - 5" L x 4" W x 1-1/2" H
- Replaces Honda **17211-ZB2-000**,
code 1496603



HONDA continued

Part # H350

- GX120, GX160 & GX200
 - Pre-oiled
 - 5-3/8" L x 3-1/8" W x 1-1/4" H
- Replaces **Honda 17211-ZE1-000**



Part # H309

- 5.5 HP vertical shaft engines, K, GXV160, HPC216K1HA, HRC216K
 - Foam pre-cleaner included
 - 6-3/4" L x 2-1/4" W x 2" H
- Replaces **Honda 17211-ZE7-W03, 17211-ZE7-W02, 17211-ZE7-W01, 5357399**



Part # H351

- Fits SX series
 - Harmony 215, Model HRM215
 - 5-3/4" L x 3-1/2" W x 7/8" H
- Replaces **Honda 17211-ZG9-M00, code 4010062**



Part # H352

- Foam pre-filter



Part # H311

- Harmony walk-behind mowers, general equipment, 2 man auger
 - 5-1/16" L x 2-5/16" W x 7/8" H
- Replaces **Honda 17211-ZG9-800, code 4327383**



Part # H8904

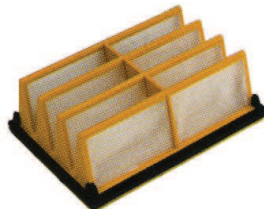
- Pre-oiled foam pre-cleaner
- 5-1/2" L x 3-1/4" W x 1/4" thick



HUSQVARNA/PARTNER

Part # P30124

- Air Filter
 - Fits chain saw models 261, 266, 281, 288
 - 3-3/4" W x 3-1/2" L x 1-3/8" H
- Replaces **Husqvarna 501 80 71-05**



Part # H30442

- Air Filter
 - Fits 365/371 model chain saws
 - 2-7/8" W x 3-5/8" L x 1-5/8" H
- Replaces **Husqvarna 503 81 45-03**



HUSQVARNA continued

Part # HU345

- Air Filter
 - Fits chain saw models 340, 345, 346XP, 350, 351, 353
- Replaces **Husqvarna 5370240-03**



Part # HU353

- Air Filter
 - Fits chain saw models 346XP, 353
- Replaces **Husqvarna 5372649-03**



Part # HU357

- Air Filter
 - Fits chain saw models 357, 357XP, 359
- Replaces **Husqvarna 5370109-03**



Part # HU55

- Air Filter
 - Fits chain saw models 51, 55, 55 Rancher
- Replaces **Husqvarna 5038981-01**



Part # HU390

- Air Filter
 - Fits chain saw models 385, 390
- Replaces **Husqvarna 5370093-01**



Part # HU288

- Air Filter
 - Fits chain saw model 288
- Replaces **Husqvarna 501807105**



Part # HU266

- Air Filter
 - Fits chain saw models 61, 66, 266, 281, 288
- Replaces **Husqvarna 501807101**



Part # HU334

- Air Filter
 - Fits chains saw models 334, 335, 338
- Replaces **Husqvarna 537 02 15 01**



Part # HU137

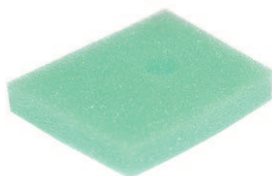
- Air Filter
 - Fits chain saw models 41, 136, 137, 141, 142
- Replaces **Husqvarna 530 02 98 11**



HUSQVARNA continued

Part # P12520

- Air Filter
 - Fits models 123, 223, 322, 323, 325, 326 trimmers
 - 2-1/4" L x 1-7/8" W x 3/8" H
- Replaces *Husqvarna 537186301*



Part # 43915

- Air Filter
 - Fits model 371K EPA cut-off saws
 - 3-3/4" W x 3-23/32" L x 2-1/16" H
- Replaces *Husqvarna 506 26 34-01*



Part # AF272

- Air Filter
 - Fits models 272K and 268K cut-off saws
 - Uses PF272 pre-filter
 - 4" W x 4-1/16" L x 3-3/16" H
- Replaces *Husqvarna 506 14 58-01*



Part # PF272

- Pre-filter
 - 3 layer foam filter
 - Pre-filter for our AF272
- Replaces *Husqvarna 506 14 57-01*



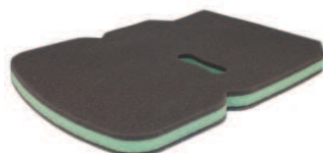
Part # AF185

- Air Filter
 - Fits model K185 cut-off saw
 - 2-9/16" H
- Replaces *Husqvarna 505 31 55-30*



Part # PF3120

- Pre-filter
 - Fits model 3120K cut-off saws
 - 3 layer foam filter
 - 6" W x 8" L x 3/4" H
- Replaces *Husqvarna 506 26 86-01*



Part # AF372

- Air filter
 - Fits models 371K-372 XP cut-off saws
- Replaces Husqvarna



Part # PF372

- Pre-filter
 - Fits models 371K and 372K cut-off saws
 - 3 layer foam filter
 - 4-7/8" W x 7-5/8" L x 3/4" H
- Replaces *Husqvarna 506 26 91-01*



HUSQVARNA continued

Part # AF575

- Air filter
 - Fits model 575 cut-off saw
- Replaces Husqvarna



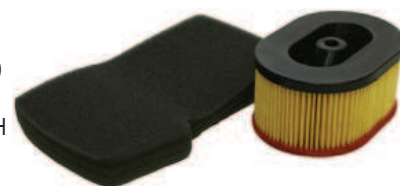
Part # P30149

- Fits K650 Active
- Replaces *Partner 505 31 55-46*



Part # 43081

- Air Filter
 - Fits models K650 Active/K700 Active cut-off saws
 - 3-3/8" W x 4-3/4" L x 2-3/32" H
- Replaces *Partner 506 22 42-01*



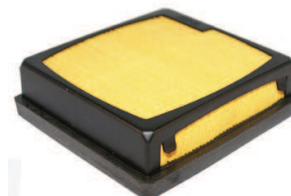
Part # PF700

- Pre-Filter
 - Fits models K650 and K700 Active cut-off saws
 - 3 layer foam filter
 - 7-7/8" L x 4-1/2" W x 3/4" H
- Replaces *Partner 506 22 63-01*



Part # P43982

- Main filter
 - Fits models K750 cut-off saws
- Replaces *Husqvarna 506 36 72-03*
\$8.95 ea., \$7.95 for 5 or more



Part # PF750

- Pre-filter for our part # P43982
 - Fits models K750 cut-off saws
 - 3 layer foam filter
 - 4-7/8" W x 7-5/8" L x 3/4" H
- Replaces *Husqvarna 506 36-71-01*



Part # AF950

- Foam air Filter
 - Fits model K950 Active cut-off saw
- Replaces *Partner 506 23 1901*



Part # AF760

- Model K760 main filter
 - Fits model K760
- Replaces *Husqvarna 525 47 0601*
NEW!



HUSQVARNA continued

Part # AF1250

- Air Filter
 - Fits model K950 Active, K1250 Active cut-off saws
 - 4-1/4" W x 6" L x 2-5/8" H
- Replaces **Partner 506 23 1801, 506 23 1802**



Part # PF1250

- Pre-Filter
 - Fits model K1250 Active cut-off saw
 - 6-1/2" W x 10-5/32" L x 13/16" H
- Replaces **Partner 506 26 87-01**



JOHN DEERE

Part # JD13389

- Fits models F1145, F925, F932, F935, 755, 855 and 955
 - 4" OD x 8-1/4" L
- Replaces **Kawasaki 11029-7023**
NEW!



KAWASAKI

Part # KA13382

- Fits FJ180V engine
- Replaces **Kawasaki 11029-7023**
NEW!



Part # KA7022

- Fits models FH1641D and FH721D
 - For 25 HP liquid cooled engines
 - 5-1/2" ID x 8" OD x 2-1/2" H
 - Use our pre-filter KA7023
- Replaces **Kawasaki 11013-7022, 1013-7011**



Part # KA7023

- Pre-filter for our part # KA7022
- Replaces **Kawasaki 11013-7023**



Part # KA2021

- Fits 12.5 HP FB460
 - 7" L x 2-1/4" W x 2-15/16" H
- Replaces **Kawasaki 11013-2021; Gravely 042926; John Deere AM101191; Wheel Horse KW10017**



Part # P33230

- Foam wrap for our part # KA2021
- Replaces **Kawasaki 11013-2020**



KAWASAKI continued

Part # KA2098

- 17 HP - model FC540V
 - Kawasaki equipped John Deere
 - 7-1/2" L x 3-1/4" W x 3-1/8" H
- Replaces **Kawasaki 11013-2098, 11013-2143, 11013-1214; John Deere M97266, M70128**



Part # P33231

- Foam wrap for our part # KA2098



Part # KA2110

- 13 & 14 HP - Model FC400/FC420V
 - 6-1/8" L x 2-3/4" W x 3-1/8" H
- Replaces **Kawasaki 11013-2141, 11013-2110; Gravely 21391300 J; John Deere AM401560, M97211**



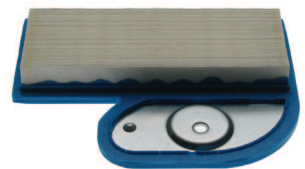
Part # P33232

- Foam wrap for our part # KA2110
- Replaces **Kawasaki 11013-2109**



Part # KA7002

- 17 HP FH-500V engine
 - For Cub Cadet 1500 series tractors w/ 17-19 HP engines
 - Waffle panel type filter
 - 8-5/16" L x 6-3/8" W x 1-1/4" H
- Replaces **Kawasaki 11013-7002; Cub Cadet 490-200-004; John Deere M137556**
\$7.95 ea., \$6.95 for 3 or more



Part # P33233

- Pre-cleaner for our part # KA7002, pre-oiled
- Replaces **Kawasaki 11013-7001**



Part # KA2115

- 18 HP water cooled engines
 - Models FD590V, AS05
 - John Deere 240, 245, 260, 265, 285, 320, 325, F710, F725, 345, 425, 445
 - 8-5/8" L x 3-5/8" W x 2-3/4" H
- Replaces **Kawasaki 11013-2115, 11029-2001; John Deere M76077, M76076; Gravely 21495800, 2145900, 2149600**



Part # P30329

- Foam wrap for our part # KA2115, pre-oiled
- Replaces **Kawasaki 11013-2114**



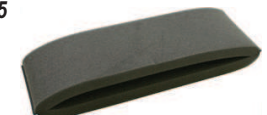
Part # KA2139

- 20 & 25 HP twin cylinder water cooled engines
 - Model FD-620
 - Used on Scag
 - 7-3/4" L x 4-1/2" W x 2-7/8" H
- Replaces **Kawasaki 11013-2139, 11029-2005**



Part # P30329

- Foam wrap for our part # KA2139
- Replaces **Kawasaki 11013-2114**



KAWASAKI continued

Part # KA202

- 19 HP - 25 HP vertical shaft engines
- Models FH601, FH680, FH641, FH721
- 7-5/16" L x 3-1/2" W x 3-5/16" H

Replaces **Kawasaki 11029-7002, 11013-7010, 11029-7012, 11013-7024, 11013-7027**



Part # P30527

- Foam wrap for part # KA202
- Replaces **Kawasaki 11013-7009**



Part # KA2186

- 23 HP & 27 HP
- Fits FD671D, FD711D, FD750D, FD791
- 7-7/8" dia., x 2-13/16"
- Includes foam wrap

Replaces **Kawasaki 11013-2195, 11013-2186, 11013-2213**



Part # P30324

- Pre-oiled foam pre-cleaner
- Replaces **Kawasaki 11013-2194**



Part # KA1312

- FA210
- For 5.2 HP engines
- 3" Dia. x 2-1/8" H; Base 4-7/8" x 4-1/4"

Replaces **Kawasaki 3144-AA-1312A, 49064-2059**
John Deere M71958



Part # KA7031

- Fits KAI engines
- 13 HP, 15HP, 17 HP & 19 HP engines
- Fits FH381V-S20-28, FH430V, FH451V, FH580V
- 7-3/8" L x 3-3/8" W x 2-3/8" H

Replaces **Kawasaki 11013-7031, 11013-7026**
\$9.25 ea., \$8.25 for 3 or more



Part # P30966

- Pre-filter for our part # KA7031
- Replaces **Kawasaki 11013-7025**



Part # K25083

- For 25 HP air cooled, 27 HP liquid cooled
- FH601D, FH641D, FH680D, FH721D
- 2-1/2" ID x 4-1/8" OD x 10-3/4" H

Replaces **Exmark 103-1327;**
Kawasaki 11013-7020;
Bad Boy 063-8019-00
Gravely 21537000

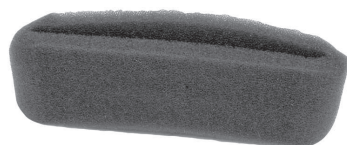


Part # K2508304

- Inner filter for our part # K25083
- Replaces **Kawasaki 11013-7019**

Part # K30326

- TH026D model
 - Pre-oiled foam filter
- Replaces **Kawasaki 11013-2182**



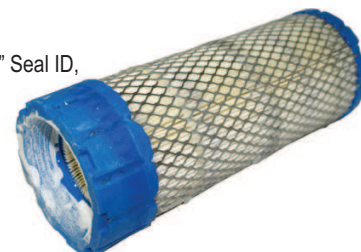
KAWASAKI continued

Part # P30157

- Outer filter
- Fits models FX751V, FX801V, FX850V, FX921V and FXT00V
- Use with P30158
- 10-3/4" L x 4-1/8" Seal OD x 3-1/8" Seal ID, 4" Closed End OD

Replaces **Kawasaki 11013-7038;**
Fleetguard AF26168

NEW!



Part # P30158

- Inner filter
- For models FX751V, FX801V, FX850V, FX921V and FXT00V
- 10" L x 3" Seal OD x 2" Seal ID, 1-5/8" Closed end OD

Replaces **Kawasaki 11013-7039,**
Fleetguard AF26166

NEW!



Part # K2508302

- Fits 19 HP engines with cannister filter option
- Fits 23 HP liquid-cooled engine with cannister filter option
- 3-1/2" OD, 1-3/4" ID, 7-3/8" H

Replaces **Kawasaki 11013-7029;**
John Deere M113621; Exmark 93-2195;
Toro 93-2195; Walker 5090-01



Part # K2508303

- Inner filter for our part # K2508302



Part # KA2135

- FD440 model
- 7" L x 3-5/8" W x 2-1/2" H
- Use pre-filter KA8505

Replaces **Kawasaki 11013-2135;**
John Deere M115978, M96847



Part # KA2132

- FE120, FE170, FD671D, FD721D, FD750D
- 4 HP, 5.5 HP, 23 HP and 24 HP engines
- 5-15/16" OD x 5" ID x 2-3/8" H

Replaces **Kawasaki 11013-2132**



Part # KA7049

- Fits FS481, FS651, FR651V-FR730V
- Replaces **Kawasaki 11013-7049**

NEW!



KAWASAKI continued

Part # KA2093

- FC290V
 - 9 HP overhead valve engines
 - Tear shaped
 - 4-3/4" L x 2-7/8" H x 3-3/8" ID x 2-7/8" W
- Replaces **Kawasaki 11013-2093;**
John Deere M70284



Part # KA30936

- Pre-oiled foam pre-cleaner
 - 5" L x 2-3/8" W
- Replaces **Kawasaki 11013-2092;**
John Deere M70283



Part # KA7010

- FJ1800 and FJ180V
 - 8-5/8" L x 2-3/4" W x 1-1/8" H
- Replaces **Kawasaki 11029-7010**



Part # KA2120

- FX150V-19A00, VC150V-A500, FC150V-E - ES05
 - 4-1/2 & 5 HP vertical engines, walk-behind mowers
 - 4" L x 2-1/2" W x 2-3/8" H
- Replaces **Kawasaki 11013-2120, 11013-2175; John Deere M79451**



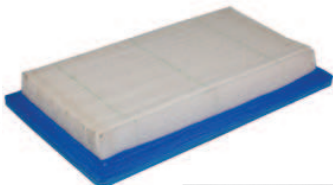
Part # KA30939

- Pre-oiled foam pre-cleaner for KA2120
 - 4-5/8" L x 1-7/8" W
- Replaces **Kawasaki # 11013-2119;**
John Deere M77555



Part # KA7017

- FH318V and FH430B
 - V-twins 15, 18 and 21 HP
 - 7-3/8" L x 4-5/16" W x 1" H
- Replaces **Kawasaki 11013-7017**



Part # KA7016

- Pre-oiled foam pre-cleaner
- Replaces **Kawasaki 1013-7016**



Part # KA7018

- Foam air filter
 - FJ180V-AS04
 - 7" L x 2-1/4" W x 3/8" H
 - Use with our part # KA7010
- Replaces **Kawasaki # 11013-7018**



Part # AF7006

- Air Cleaner Hood
 - Kohler models CH18 - CH25, CV20 - CV26
- Replaces **Kawasaki 11065-7006;**
Kohler 25-324-02
\$17.42



KOHLER

Part # AF305

- Remote Cannister Housing
- Replaces **Kawasaki # 11010-7011**



Part # AF305A

- Dust Ejector Valve
- Replaces **Kawasaki # 11065-7008**



Part # P30159

- For SV810S, SV820S and SV830S model series engines
 - 5-5/8" L x 4-3/8" W x 3-1/8" H
- NEW!**



Part # K8303

- 10 HP, 12 HP, 14 HP & 16 HP & 20-26 HP horizontal and vertical shaft engines
 - CV17 - CV26, CV675 -740
 - Type A standard air cleaner
 - K241, K301, K321, K361
 - 7" OD, 5-1/2" ID, 2-1/2" H
 - Use pre-cleaner P30944
- Replaces **Kohler 47-083-03-S1, 47-883-03-S1;**
John Deere M47494



Part # K7138

- 12 HP, 14 HP, 20 HP, 23 HP K Series horizontal engines
 - K301, K321, K482, K532, K582
 - 6" OD x 4-3/4" ID x 4" H
- Replaces **Kohler 277138; Gravely 2144930**



Part # P33251

- Foam wrap for our part # K7138, pre-oiled
- Replaces **Kohler 277593**



Part # K8301

- 10 HP, 12 HP, 14 HP, 16 HP quiet K series engines
 - 17 HP, 18 HP 19 HP, 20 HP twin cylinder Magnum horizontal engines
 - K181 - K241-K341, KT17, KT19, M18 - M20
 - Also used on Grazer and Snapper ZTR
 - 7" OD x 5-1/2" ID x 1-3/4" H
 - Use pre-cleaner P30947
- Replaces **Kohler 47-083-01-S1; Cub Cadet 117210C1, 759-3547; Gravely 032494; John Deere M836**



Part # K8302

- 10 HP, 12 HP, 16 HP, 18 HP, 20 HP Magnum vertical shaft engines
 - Type B commercial air cleaner
 - 6" OD x 4-3/4" ID x 2-7/8" H
- Replaces **Kohler 45-083-02, 45-883-02-51;**
Cub Cadet 61606-C1; Gravely 034766;
John Deere AM37201



Part # P30946

- Foam wrap for our part # K8302, pre-oiled
- Replaces **Kohler 45-083-01**



KOHLER continued

Part # K24083

- 18 HP, 20 HP, 26 HP Command vertical & horizontal engines
 - CV17-745, CV675, CV25, CV26
 - Type A standard air cleaner
 - 7" OD, 5-1/2" ID, 2-7/8" H
- Replaces **Kohler 2408303**



Part # P30945

- Foam wrap for our part # K24083
 - Pre-oiled
- Replaces **Kohler 24-083-05-S**



Part # K8305

- CV 11, 12.5, 13, 14, 15, 16, 460 & 493
 - Kohler Command vertical OHV engines
 - Short profile
 - 4-1/2" L x 3-3/4" W x 2-13/16" H
- Replaces **Kohler 12-083-05, 12-883-05-S1; John Deere M92359, M121608**



Part # P30942

- Foam wrap for our part # K8305
 - Pre-oiled
- Replaces **Kohler 12-083-08S**



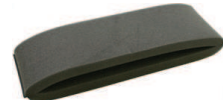
Part # K12083

- CV 11, 12.5, 13, 14, 15, 16, 460 & 493
 - Kohler Command vertical OHV engines w/large capacity filter housing - Tall profile
 - 4-1/2" L x 3-3/4" W x 3-5/16" H
- Replaces **Kohler 12-083-10-S1, 12-083-16**



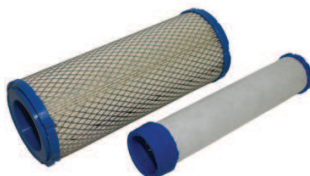
Part # P30943

- Foam wrap for our part # K12083, pre-oiled
- Replaces **Kohler 12-083-12S**



Part # KOH2508301S

- 23 HP, 25 HP, 27 HP, 28 HP Command Pro engines
 - Fits models CH20S-64613, CH22-66557, CH22-66558 & CH26S-78511
 - Also fits Generac 25 HP
 - 4" OD x 2-13/32" ID x 10-1/2" L
- Also Replaces **Generac OE3557; Gravely 21537000; Kawasaki 11013-7020**



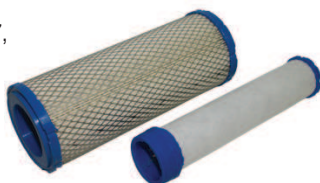
Part # KOH2508304S

- Inner filter for our part # KOH2508301S

KOHLER.

Part # K25083

- 27 HP & 28 HP Command Pro engines
 - Fits models CH20S-64613, CH22-66557, CH22-66558 & CH26S-78511, CH25, 16 - 26 HP engines
 - Fits Toro Z-Master 200 series
 - 4" OD x 2-13/32" ID x 10-1/2" H
- Replaces **Kohler 25-083-01S; B&S 841497; Exmark 103-1327; Gravely 21537000; Kawasaki 11013-7020**
\$12.95 ea., \$8.95 for 3 or more



Part # K2508304

- Inner filter for our part # K25083
- Replaces **Kohler 25 083 04 S, Kawasaki 11013-7019**
\$12.95 ea., \$8.95 for 3 or more

KOHLER continued

Part # KOH2508302S

- Fits models CH25, CH26 and TH16
- Cannister models only
- 3-1/2" OD x 1-3/4" ID x 7-3/8" H



Part # KOH2508303S

- Inner filter for our part # KOH2508302S

KOHLER.

Part # K2508302

- Fits models CH25, CH26 and TH16
 - Cannister models only
 - For most water cooled engines with remote air cleaner
 - 3-1/2" OD x 1-3/4" ID x 7-3/8" H
- Replaces **Kohler 25 083 02 S; Exmark 93-2195; John Deere M113621; Toro 93-2195; Walker 5070-01**



Part # K2508303

- Inner filter for our part # K2508302
- Replaces **Kohler 25-083-03 S**

Part # K5116

- 10, 12 & 14 HP engines
 - K241, K301, K321 series
 - 6-1/16" OD x 4-3/4" ID x 1-7/8" H
- Replaces **Kohler 25-883-03-S1, 235116; Cub Cadet 385168R2; John Deere AM31400; Wisconsin L0194A; Gravely 010900; Tecumseh 32008**



Part # P30941

- Pre-oiled foam pre-cleaner
 - 9" L x 1-3/4" W
- Replaces **Kohler 237421-S; John Deere M45800; Gravely 019332; Tecumseh 32906**



Part # P30522

- Foam pre-cleaner, heavy duty
- Relaces **Kohler 41-083-04**



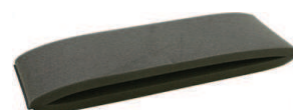
Part # K1847

- 7 & 8 HP engines
 - K161 & K181 series
 - 4-3/8" OD x 3" ID x 2-3/8" H
- Replaces **Kohler 25-883-01-51, 231847; Cub Cadet 548436R1; John Deere AM30800; Tecumseh 31925; Onan 140-1188**



Part # P30125

- Pre-oiled foam pre-cleaner
 - 7" L x 2-3/8" W
- Replaces **Kohler 234869**



KOHLER continued

Part # K8302

- 16 HP engines
- K341 series, MV16 - 20, M10 - M16, KT17, KT19, K321, K482, CV20, CV18, 22
- 6" OD x 4-5/8" ID x 3" H

Replaces **Kohler 45-883-02-51, 45-083-02; Cub Cadet 61606C1, 759-3359; John Deere AM37201, AM31034; Onan 140-1216; Gravely 0347661046344**



Part # P30946

- Pre-oiled foam pre-cleaner
- 8-3/4" L x 3" W

Replaces **Kohler 45-083-01**



Part # K8303

- 10, 12, 14, 16 HP quiet series engines
- K241AQS, K301AQS, K321AQS, K341AQS, CH18, CH20, CH25, CV18, CV20, CV22 series
- 7" OD x 5-1/2" ID x 2-1/2" H

Replaces **Kohler 47-883-03-S1, 47-083-03-S1; John Deere M47494; Woods 71803**



Part # P30944

- Pre-oiled foam pre-cleaner
- 10-1/2" L x 2-3/8" W

Replaces **Kohler 24-083-02**



Part # P30023

- TH16-TH18 command series engines
- TH16-52501-52532 except 52502, 52503, 52509, 52512, 52513, 52519, 52520; TH18-52501-54526 except 52502, 52503, 52509, 52512, 52513, 52519, 52520
- 9-1/4" L x 6-3/4" W x 1-1/2" H

Replaces **Kohler 28-083-03-S**



Part # P30340

- Pre-oiled foam pre-cleaner

Replaces **Kohler 8-083-02-S, 28-08302S**



Part # KOH3208303S

- For Courage Series engines
- Fits models SV710-740
- 4 x 2-3/4" ID x 5-3/4" x 4-3/8" OD x 1-3/4" H

Replaces **Kohler 32-083-03**



Part # P33245

- Pre-filter foam wrap for our part # KOH3208303S

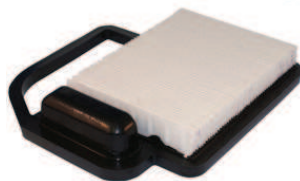
Replaces **Kohler 32-083-05**



Part # KOH2008302S

- For Courage series engines
- Fits models SV470 - SV600
- 8" L x 7-3/4" W x 1-1/2" H

Replaces **Kohler K2008302S**



KOHLER continued

Part # AF7006

- Rain Hood
- 5-1/4" OD x 2" ID x 2-7/8" H

Replaces **Kohler 25-324-02S**



Part # AF12674

- Air Filter
- Fits SV810-SV830 series engines
- 5-3/4" x 4-3/8" OD x 4" x 2-3/4" ID x 3-1/8" H

Replaces **Kohler 32-083-06-S**



KUBOTA

Part # KU13383

- Outer filter
- Fits ZD326 Diesel Zero Turn Mower w/Kubota D1005 3 Cylinder Diesel

Replaces **Kubota K3181-82250**

NEW!



Part # KU13384

- Inner filter
- Fits ZD326 Diesel Zero Turn Mower w/Kubota D1005 3 Cylinder Diesel

Replaces **Kubota K3181-82250**

NEW!



Part # KU111

- Cyclonic air filter
- B20, B1550, B1750, D, E, HSD, HST, G1800-S, G1900HST, G2000, G2000S, G3200, G4200H, G5200H, G6200H
- 3-1/4" top OD x 5" bottom OD x 7" H

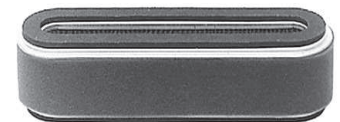
Replaces **Kubota 15852-11082, 15852-11081**



Part # KU11220

- 5 HP engines - self-propelled models
- Includes foam pre-cleaner
- 7-7/8" L x 2-1/8" W x 2" H

Replaces **Kubota 12681-11220**



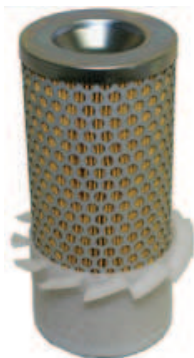
KUBOTA continued

Part # KU1122

- Diesel, B series up to 20 HP
- Models B5100, B5200, B6100, B6100DT, B6100HST, B7100, M7100DT, B7100HST, B8200HST, L225, L225DT, L235, C245, L245DT, L245H, L260H (21 & 24 HP), L275

• 7-1/4" H, 3-5/16" dia.

Replaces **Kubota 70000-11221, 15222-11221; Jacobsen 502619; John Deere M75144; Onan 140-2842; Toro 33-1300**



Part # KU30026

- Cyclonic air filter
- L series 20 HP and above
- 4-1/16" x 10-3/8"
- Used on most Dixie Choppers

Replaces **Kubota 70000-11081; Toro 27-7110; Dixie Chopper 90122; Bobcat 48426; John Deere CH12767**



ONAN

Part # K8302

- 16 HP - 18 HP engines
- BF, BFA, BS, BGA, B43, B48
- 6" OD x 4-3/4" ID x 2-7/8" H

Replaces **Onan 140-1216; Cub Cadet 61606C1; Gravely 034766**



Part # P30946

- Foam wrap for our part # K8302

Replaces **Onan 45-083-01**



PARTNER

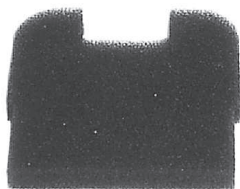
See Husqvarna

RED MAX

Part # RE55509

- For trimmers
- Red Max BC260
- Pre-oiled foam
- 2-1/2" x 2-1/4" x 3/8"

Replaces **Red Max 16010-82311, 1601-82310**



Part # RE310

- EB7000 blower

Replaces **Red Max T4012-82310**
\$6.85 ea., \$4.95 for 5 or more



Part # RE30955

- EB7000 blower
- Pre-oiled foam

Replaces **Red Max T4012-82320**



RED MAX continued

Part # RE30067

- BC2300DL, BC2600DL trimmers
- Pre-oiled foam

Replaces **Red Max # 550-82171**



Part # P30719

- Fits EC7500 and EC7600 cut off saws
- Includes foam pre-filter
- 7" L x 4" W x 2" H

Replaces **Red Max 38010-82581**



SHINDAIWA

Part # P30722

- Air filter assembly
- For models C35 and B45

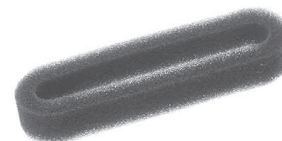
Replaces **Shindaiwa 20040-81700, 20040-8170**



Part # P50170

- Fits models T18, F18, T230, C230, LE230 & T230XB trimmers
- 3-7/16" L x 13/16" W x 1/2" H

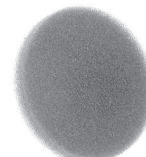
Replaces **Shindaiwa 70064-82210**



Part # P50184

- Fits Shindaiwa models T25 & LT20
- Fits Green Machine model 3000SS
- 2-3/8" OD x 1/2" H

Replaces **Shindaiwa 2000-81740; Green Machine 30981; Robin 1082; Stihl 4114-124-0800**



Part # P30719

- EC7500 and EC7600 cut off saws
- Includes foam pre-filter
- 7" L x 4" W x 2" H

Replaces **Shindaiwa 38010-82581**



Part # P30721

- T230 and T231 trimmers
- 2-1/2" L x 1-7/8" W x 3/8" H

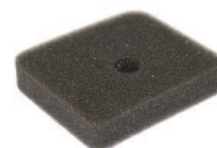
Replaces **Shindaiwa 60023-98031**



Part # P12024

- Air filter
- Fits model T-230 trimmers

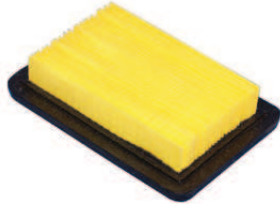
Replaces **Shindaiwa 20018-81750**



SHINDAIWA continued

Part # P11641

- Air filter
 - Fits model EB8510 backpack blower
- Replaces **Shindaiwa 68900-82120**
\$8.95 ea., \$6.95 for 5 or more



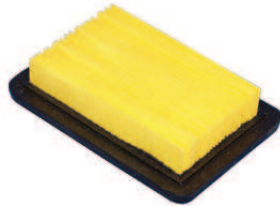
Part # P11642

- Pre-filter
 - Fits model EB8510 4-cycle backpack blower
 - Use with our part # 11641
- Replaces **Shindaiwa 68900-82320**



Part # AF2899

- Air Filter
 - Fits models EB802, EB802RT, EB8520 and EB8520RT
 - 3-5/8" W x 5" L x 1-13/16" H
 - Uses our AF2903 pre-filter
- Replaces **Shindaiwa 68242-82120**



Part # AF2903

- Pre-filter
 - Fits our part # AF2899
- Replaces **Shindaiwa 68242-82310**



STIHL

Part # S50182

- Fits model FS80 trimmers
 - 2" OD x 3/8" H
- Replaces **Stihl 4112-124-0801**



Part # AF249

- Fits FS120, FS200, FS250, FS350, FS450
 - 3-7/16" L x 2-3/4" W x 1" H
- Replaces **Stihl 4134 141 0300**



Part # P11807

- Fits BG75, FC75, FC85, FS75, FS80, FS85, FS85R, HL75K, HS80, HS85
 - 2-3/8" L x 2-3/8" W x 1/4" H
- Replaces **Stihl 4137 124 2800**
\$3.50 ea., \$2.99 for 5 or more



Part # S50183

- Fits models FS74, 76, FC72, HD 72, 74, 76 & BG 72 trimmers
 - 2-7/16" L x 2-7/16" W x 1/4" H
- Replaces **Stihl 4137-124-1500**



STIHL continued

Part # P110124

- Fits FS100 trimmers
- Replaces **Stihl 4133-124-2800**



Part # P8716

- Fits FS74, 76, FC72, 74, 76 and BG 72
 - 2-7/16" L x 2-7/16" W x 1/4" H
- Replaces **Stihl 41331241500, code 135263300**



Part # P110120

- Fits FS90, FS100, FS110
- Replaces **Stihl 4180-120-1800**
\$4.59 ea.



Part # S4203

- Fits models BR320 & BR400 backpack blowers
 - 1-3/4" ID x 2-7/8" OD x 1-5/8" H
- Replaces **Stihl 4203-141-0300**



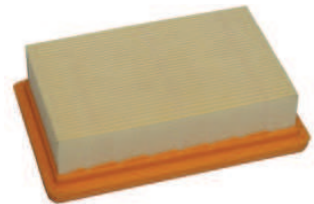
Part # S50280

- Pre-filter for our part #S4203
- Replaces **Stihl 4203-141-0310**



Part # S420

- Fits models BR320, 340, 400 & 420 backpack blowers
 - 5-1/8" L x 3-1/2" W x 1-1/2" H
- Replaces **Stihl 4203-141-0301**
\$5.90 ea., \$4.90 for 5 or more



Part # P110203

- Fits BR420 blower
 - Use with part # S420
- Replaces **Stihl 4203-120-1500**



Part # S421

- Fits BR550 and BR600 backpack blowers
- Replaces **Stihl 4282-141-0300B**
\$8.95 ea., \$7.25 for 5 or more



STIHL continued

Part # S4282

- Fits model SH55, BG45 -BG85 blowers; BR45C
- Replaces *Stihl* 4229-120-1800



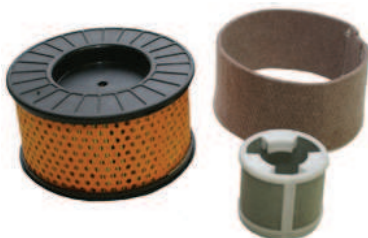
Part # P110206

- Fits models FC55 Edger
 - FS45, FS55 Trimmers
 - HS45, HL45 Hedge Trimmers
- Replaces *Stihl* # 4140-124-2800



Part # P43084

- Air filter kit
 - Fits Stihl TS460 cut-off saw
- Replaces *Stihl* # 4221-141-0300, 4221-140-1800, 4221-140-440



Part # P110237

- Fits hedge trimmer HS81T
- Replaces *Stihl* 4237-120-1800



Part # AF11

- Fits chain saw models 009, 010 and 011
- Replaces *Stihl* 1120-120-1600, 1120-124-0800



Part # AF290

- Fits chain saw models MS290, MS310, MS390, 029
 - 1-1/2" W x 4-5/8" L x 2-5/8" H
- Replaces *Stihl* 1127-120-1621



Part # AF210

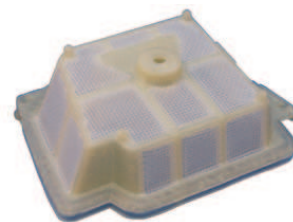
- Fits chain saw models MS210, MS230 and MS250
 - 1-3/16" W x 3-39/64" L x 1-19/64 H
- Replaces *Stihl* 1123-120-1613



STIHL continued

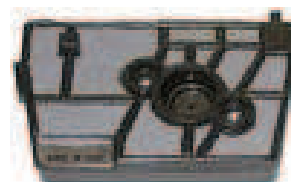
Part # AF361

- Fits chain saw model MS361
- Replaces *Stihl* 1135-120-1601



Part # AF28

- Fits chain saw model 028
 - 2-11/32" W x 3-5/8" L x 13/16" H
- Replaces *Stihl* 1118-120-1611



Part # AF192

- Fits chain saw model MS192
 - Fits T or TC
- Replaces *Stihl* 1137-120-1601



Part # AF200

- Fits chain saw model MS200T
- Replaces *Stihl* 1129-120-1602



Part # AF31

- Fits chain saw models 031 and 032
- Replaces *Stihl* 1113-120-1603, 1113-120-1602, 1113-120-1612



Part # ST260

- Fits chain saw models MS260, MS260 PRO
- Replaces *Stihl* 1121-120-1618



Part # ST1612

- Fits chain saw models 024, 026, New style
- Replaces *Stihl* 1121-120-1612



Part # AF180

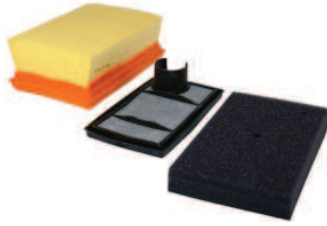
- Fits 017, 018, MS170, MS180
- Replaces *Stihl* 1130-124-0800



STIHL continued

Part # P43118

- Air Filter
 - Fits model TS400 cut-off saws
 - 3-1/2" W x 5-1/16" L x 1-15/16" H
 - Uses Part # 605-224 inner filter
- Replaces *Stihl* 4223-141-0300



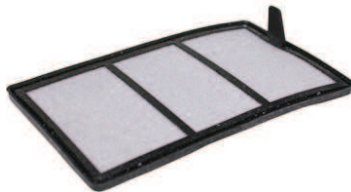
Part # P43987

- Fits model TS410/420 cut-off saws
- Replaces *Stihl* 4238-141-0300



Part # P43981

- Fits model TS410/420 cut-off saws
- Replaces *Stihl* 4238-140-1800



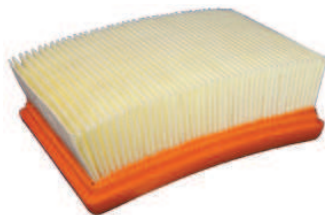
Part # P43985

- Fits model TS410/420 cut-off saws
 - Filter set
- Replaces *Stihl* 4238-141-0300, 4238-140-1800



Part # AF800

- Fits model TS700, TS800 cut-off saws
 - Filter set
- Replaces *Stihl* 4224-14-0300, 4224-140-1801



SUBARU/ROBIN

Part # SR279

- Fits model EX27
 - For 9 HP engines
 - Pre-filter included
 - 3-5/16" W x 5-3/4" L x 2-3/4" H
- Replaces *Subaru/Robin* 279-32607-07; *Wacker* 0156753



Part # SR263

- Fits models EH63, EH64 and EH65
 - Pre-filter included
 - 5-1/2" OD x 6-7/8" OD x 2-3/8" H
- Replaces *Subaru/Robin* 263-32610-01, *RA263-32610-01*



TECUMSEH

Part # T727

- Fits 3-8 HP vertical and horizontal engines
 - LAV, H, HS, HH, VH, HM, V40-70, HS30 series
 - 3-5/8" OD, 2-1/4" ID, 2" H
- Replaces *Tecumseh* 30272; *Cub Cadet* 488619R1, *TC30727*, *J Deere* AM30900



Part # K2308

- Fits 4, 5, 6 & 7 HP horizontal engines
 - H40, H50, H60 & H70 series
 - 4-3/8" OD x 3" ID x 1-1/2" H
- Replaces *Tecumseh* 30804



Part # K1847

- Fits 8, 10 & 12 HP horizontal engines
 - HH80, HH100, HH120, VH80 & VH100
 - 4-3/8" OD x 3" ID x 2-3/8" H
- Replaces *Tecumseh* 31925



Part # K5116

- Fits 8, 10, 12, 14, 16 & 18 HP horizontal engines
 - HH80, HH100, HH120, OH140, OH160, OH180
 - 6-1/16" OD x 4-3/4" ID x 1-7/8" H
- Replaces *Tecumseh* 32008; *Case C-2883*, *Cub Cadet* 385168R2, *Gravely* 010900, *J Deere* AM31400, *Wisconsin-Robin* L0194A, *Kohler* 235W6



Part # P30090

- Fits 3-5 HP engines
 - TVS 75, 90, 105 & 120 series
 - 6" L x 2" dia.
 - 1" neck dia. x 3/4" L
- Replaces *Tecumseh* 32796



Part # T972

- Fits series 3-5 HP
 - TVS90, 105, H30, 35, ECH90, LAV40
 - 3" L x 2" dia.; 1" Neck x 1" L
- Replaces *Tecumseh* 32972



Part # T268

- Fits 7, 8, 10 HP horizontal engines
 - HM70, H80, HM80, VM80, HM100 series
 - 4-1/2" OD x 1-1/2" ID x 2-1/4" H
- Replaces *Tecumseh* 33268; *J Deere* N49746



TECUMSEH continued

Part # T782

- For series HS40, HS50, H50, H70, TVS840, TVXL105, 120
 - 3-1/2" H x 2-7/8" dia. x 1/2" top ID
- Replaces **Tecumseh 34782, 34782A, 34782B**



Part # T350

- Fits 3.5 & 4 HP vertical engines
 - ECV, LEV115, ECV120, H30, 35, TVS series
 - 1-3/4" OD x 13/16" ID x 2-7/8" H
- Replaces **Tecumseh 35066;**
Sears 63087A, 10096



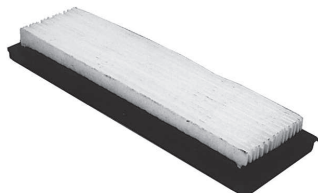
Part # T403

- Fits 12 HP vertical engines
 - OVXL120, TVSL195, OVXL125, OHV12, 13, 125, 200 series
 - 8" L x 2" W x 2-1/2" H x 2-5/8" center to center mounting holes
- Replaces **Tecumseh 35403**



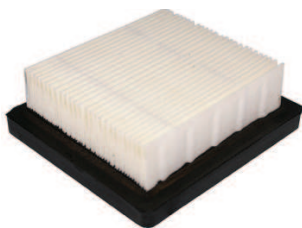
Part # P35500

- Fits 3-5 HP vertical engines with panel filter
 - TVS90, TVS100, TVS120, TVXL105, TVXL120, OVRM40, 50 OVRM 120, ECV 100 series
 - 7-3/16" L x 2-1/4" W x 3/4" H
- Replaces **Tecumseh 35500**



Part # T360

- Fits OHH45, OHH50, VLV126, VLV40, VLV50, VLV55, VLV60, VLV65, VLV66, VLXL50, VLXL55
 - 4 & 5 HP engines
 - 3-3/8" L x 3-3/4" W x 1-1/4" H
- Replaces **Tecumseh 36046**



Part # P30024

- For OHV110, OHV115, OHV120, OHV125, OHV130, OHV135, OHV140, OHV14, OHV145, OHV15, OHV150, OHV155, OHV160, OHV165, OHV170, OHV17, OHV175
 - 7-1/8" L x 2-1/4" W x 3" H
- Replaces **Tecumseh 36356**



TECUMSEH continued

Part # T745

- Fits 5.5 HP Centura engines
 - 2-3/4" L x 1-3/4" W x 2-1/8" H
- Replaces **Tecumseh 36745**



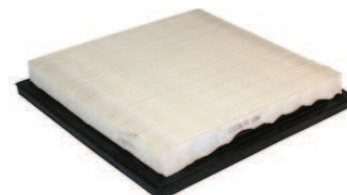
Part # T905

- Fits most 5.5 HP Tecumseh and Craftsman 65, RVS115, 120
 - 2-3/4" L x 1-3/4" W x 2-7/8" H
- Replaces **Tecumseh 36905**



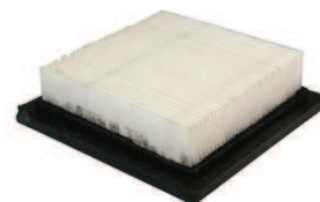
Part # T37360

- Fits OV, TVT and VTX engines
 - 7-1/4" L x 7" W x 1-1/4" H
- Replaces **Tecumseh 37360**



Part # T247

- Fits 4 HP, 2 cycle engine
 - Fits models TVS840, TVSXL840, TVXL840
 - Fits models TC200-300 engines
- Replaces **Tecumseh 450247**



WACKER

Part # 155380

- Fits BH23/24
- Replaces **Wacker 95711**



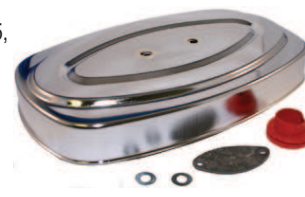
Part # 155381

- Fits BH23/24
 - Prefilter for our part # 155380
- Replaces **Wacker**



Part # 155382

- Fits BS45, BS52, BS60, BS62, BS95, BS105Y
- Replaces **Wacker 85284**



Air Filters



WACKER continued

Part # 155387

- Fits BS600, BS700, BS500, BS500S, BS600S, BS650, BS720
 - Prefilter
- Replaces **Wacker 95294**



Part # 155388

- Fits BS600, BS700, BS500, BS500S, BS600S, BS650, BS720
- Replaces **Wacker 114792**



Part # AF8076

- Air Filter
 - Fits models BTS930, BTS935, BTS1030, BTS1035 cut-off saws
 - 3-3/32" W x 4-1/4" L x 2-5/16" H
- Replaces **Wacker 0108076, 0108077**



WACKER continued

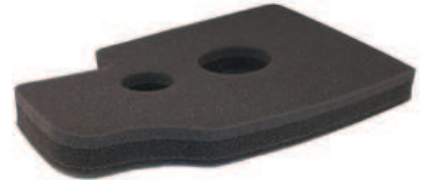
Part # AF8074

- Pre-Filter
 - 3 layer foam filter
 - Pre-filter for part # AF8076
- Replaces **Wacker 0108074**



Part # AF4305

- Pre-Filter
 - 3 layer foam filter
 - Pre-filter for part # AF8076
- Replaces **Wacker 0204305**



PowerNow™

Cordless Tool System

NEW! 40V MAX® CHAINSAW

- *Designed with all the battery muscle you need for real work*
- *Runs cleaner, quieter and free from the hassles of gasoline or cords*
- *Pull the trigger for instant start and long run time*
- *Charge the universal PowerNow battery pack and you are ready to go with lithium no-fade power*

Check out all the details on pages 372-373.

